

GOODWE

Engineered by  UMAX

RESIDENTIAL SOLAR CARPORT



Carport Specifications



	Single-Car	Double-Car
Power Output	4.815kW	8.025kW
Carport Structure Length	6500mm	6500mm
Carport Structure Width	3000mm	5200mm
Carport Peak Height	3000-3500mm	3000-3500mm
Carport Clearance Height	2000-2500mm	2000-2500mm
Solar Panels	Polaris 535W x 9PCS	Polaris 535W x 15PCS



Gamcorp Certified Structure



CEC Accredited Module

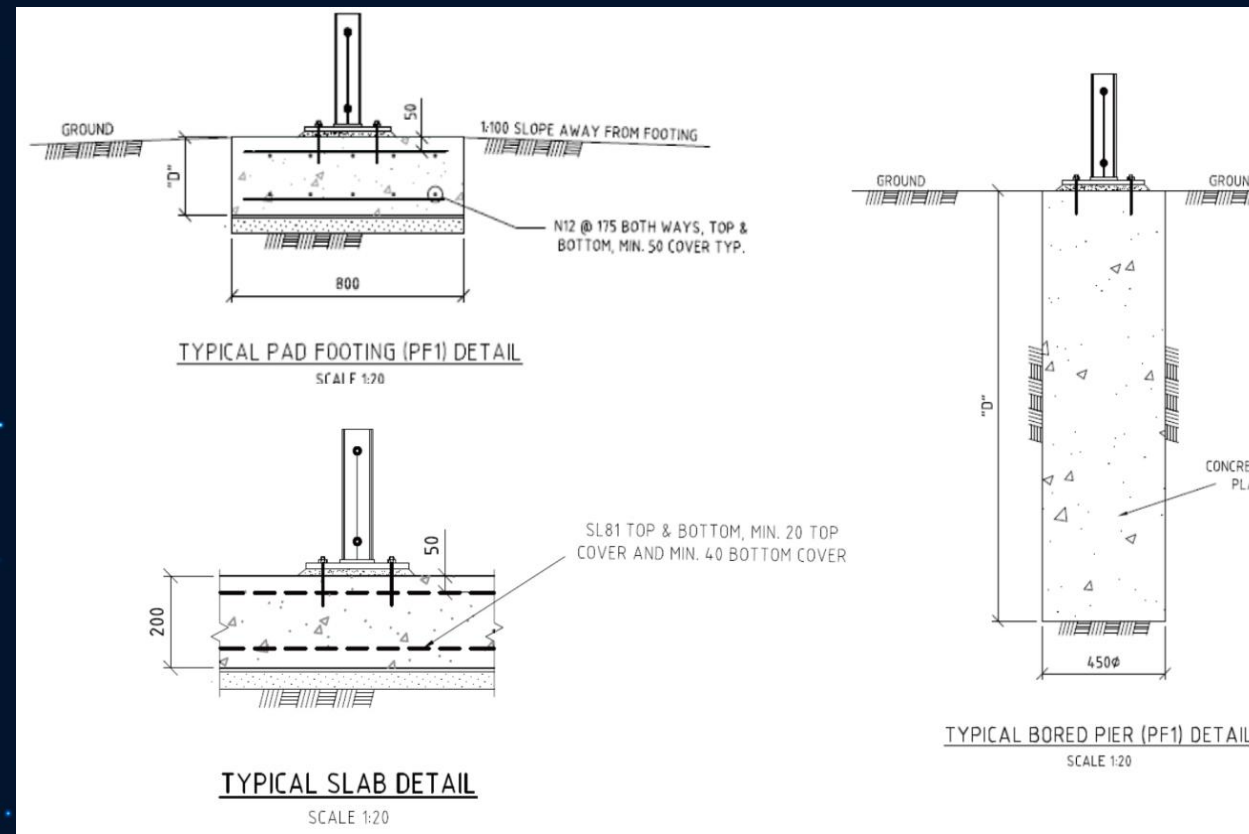
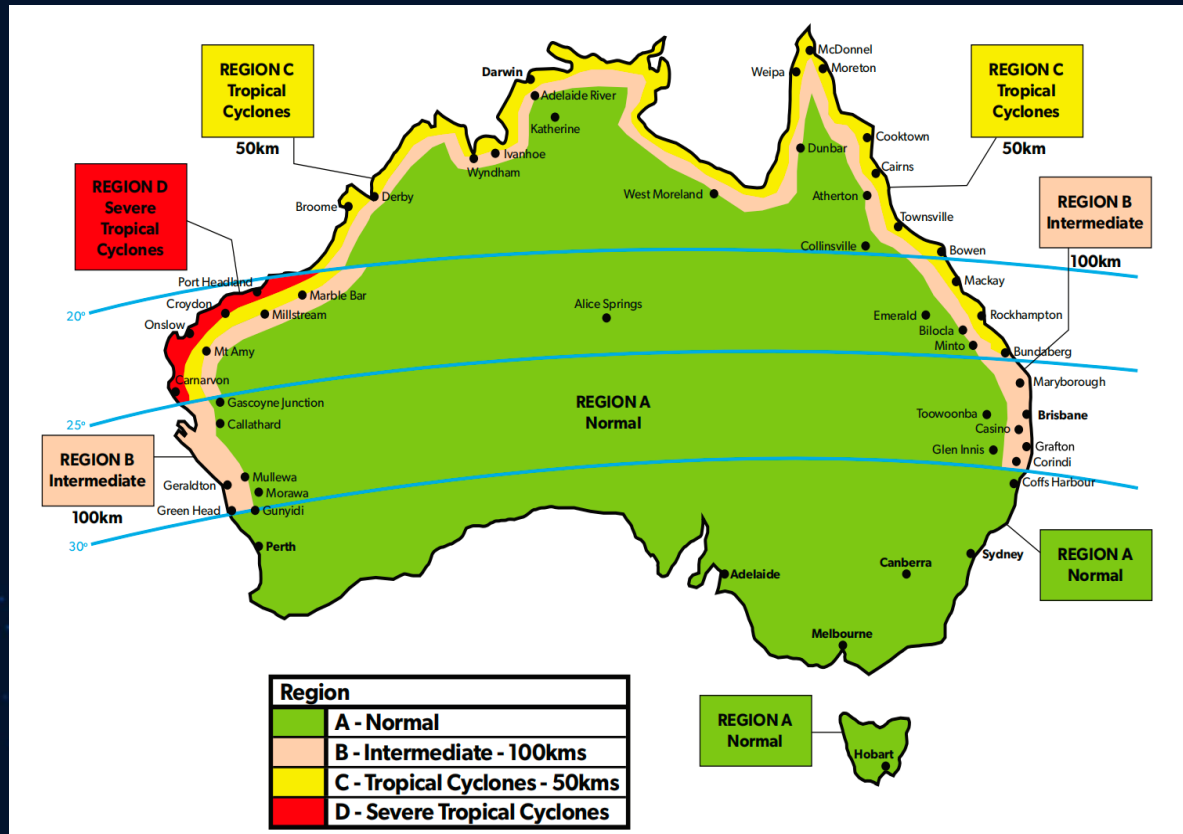


Adjustable Height & Lightweight



All-Aluminum Alloy

Installation Details - Wind Region and Foundation Design

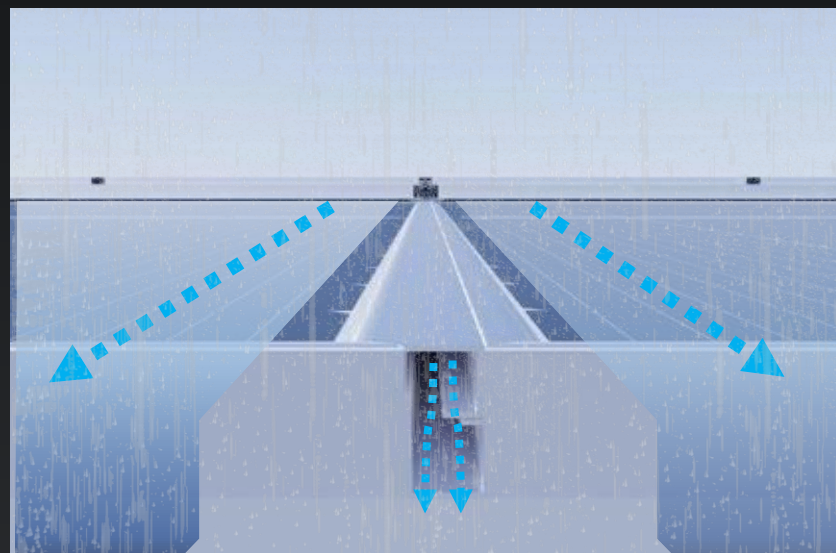


Structural Waterproofing

GOODWE PVBM



Single tile dispersion drainage



Polaris series

VS



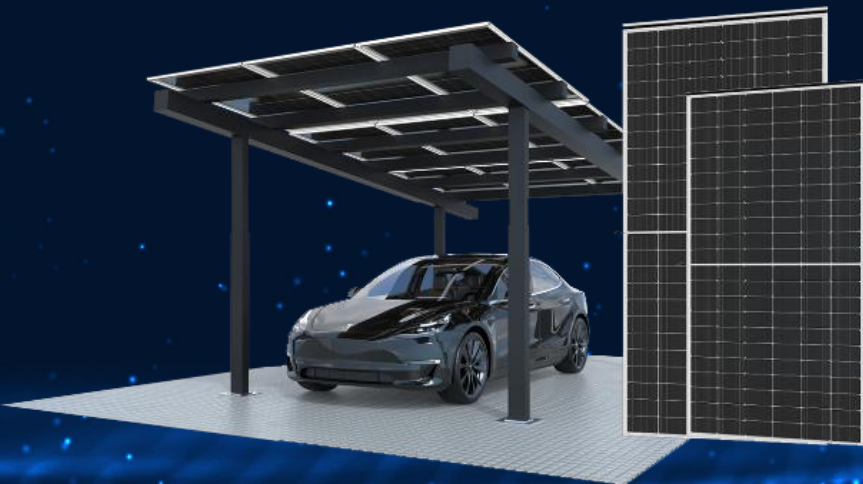
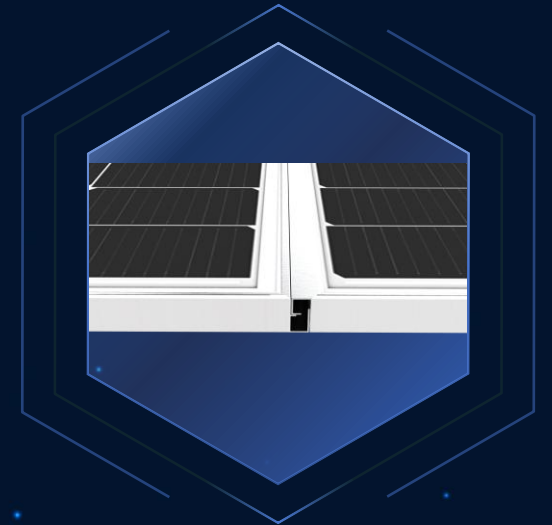
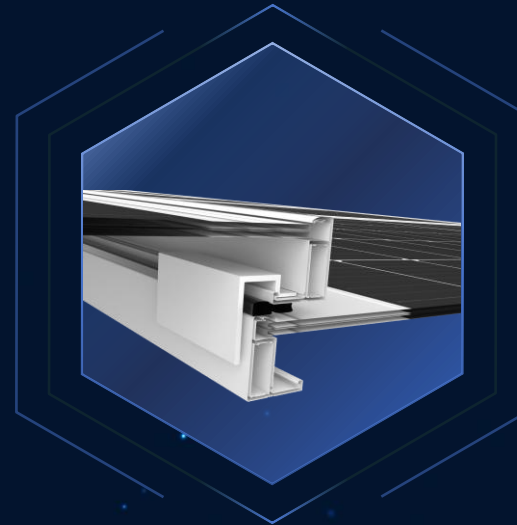
Confluent centralized drainage



Conventional module

Waterproof Solar Panel

GOODWE Polaris Series
Unique BIPV Product
Dedicated for Solar Carports



- Excellent Self-Cleaning Ability
- Structural Waterproofing

- Convenient Installation
- Double-Glass Design

Modular Design

Easy quotation & quick installation



COLUMN &
RAFTER CONNECTOR



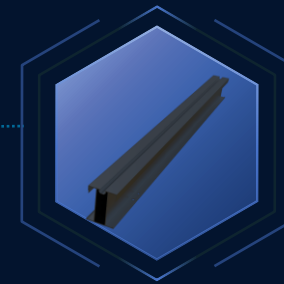
TOP COLUMN



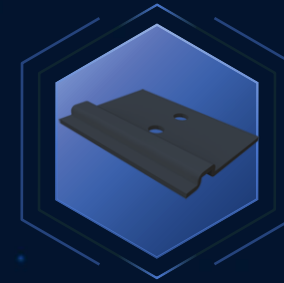
BOTTOM COLUMN



RAFTER



PURLIN



PANEL CLAMP



BASE



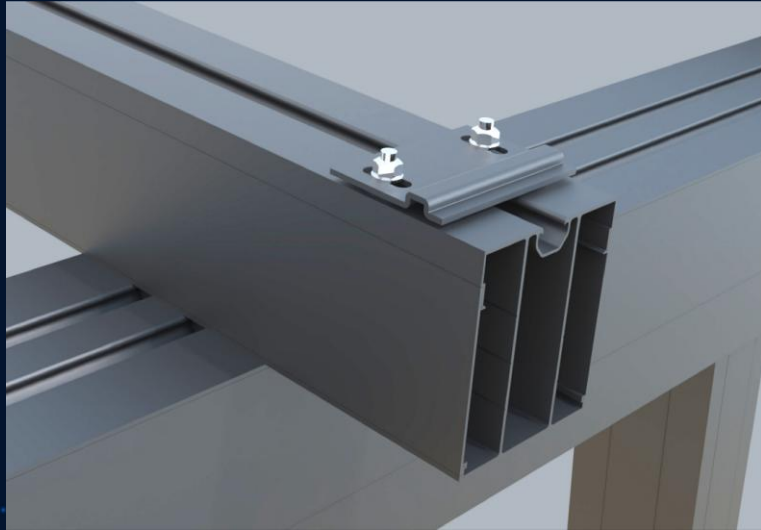
Modular Design

Easy quotation & quick installation

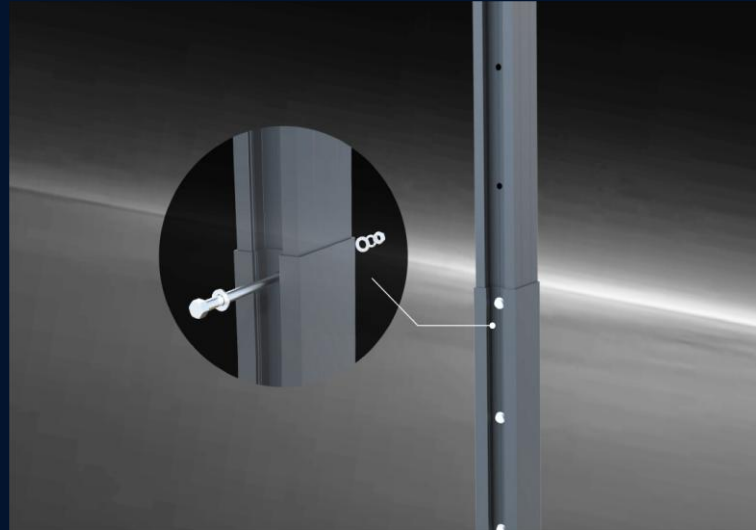


Easy & Flexible Installation

GOODWE
Engineered by  UMAX



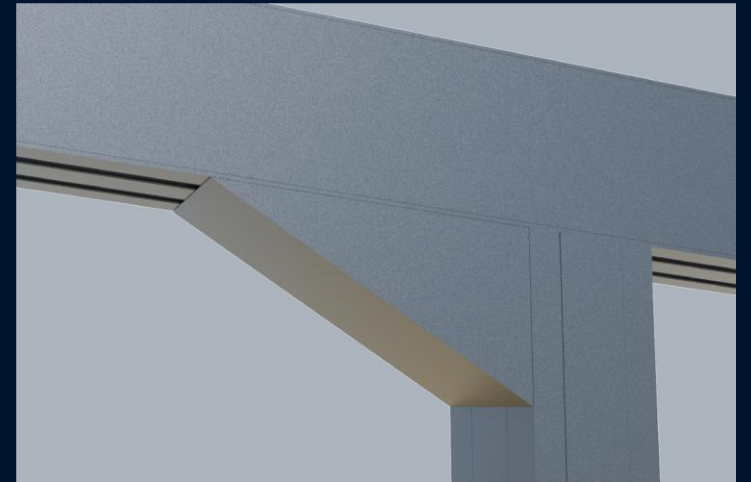
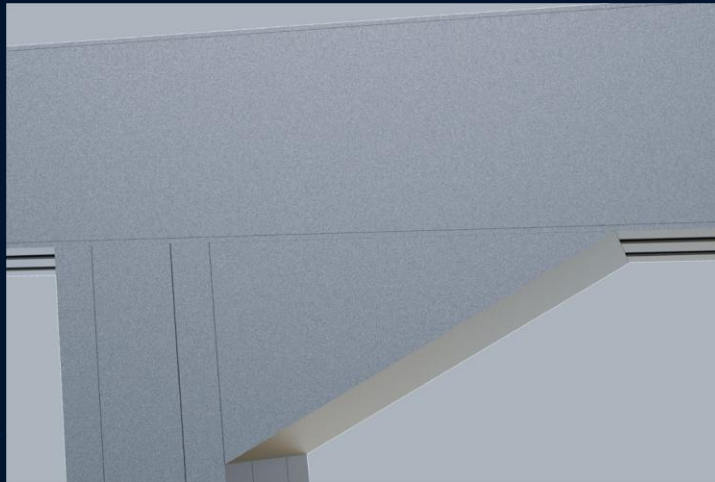
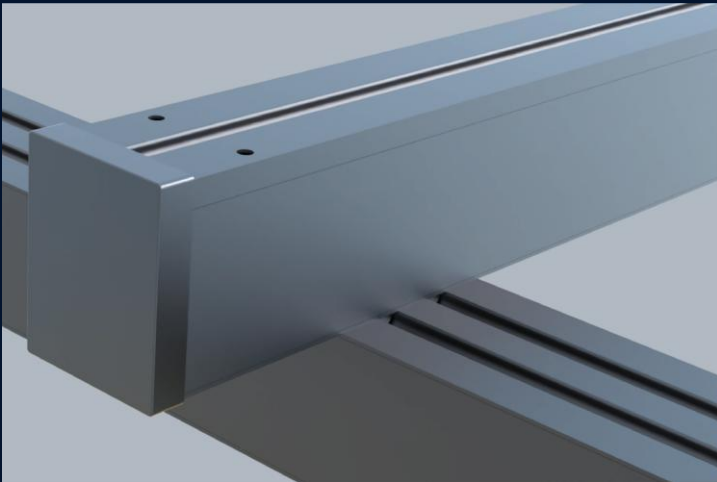
Underneath Panel Mounting



Adjustable Height

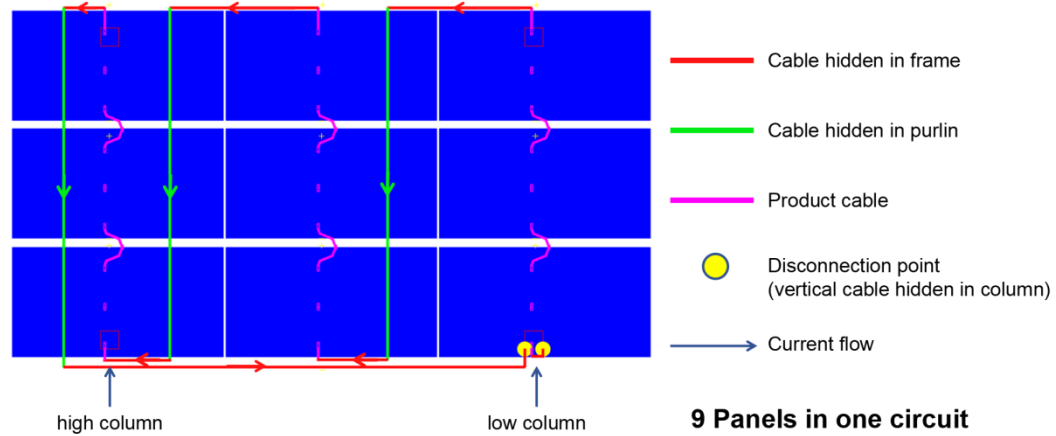


Aesthetic Design

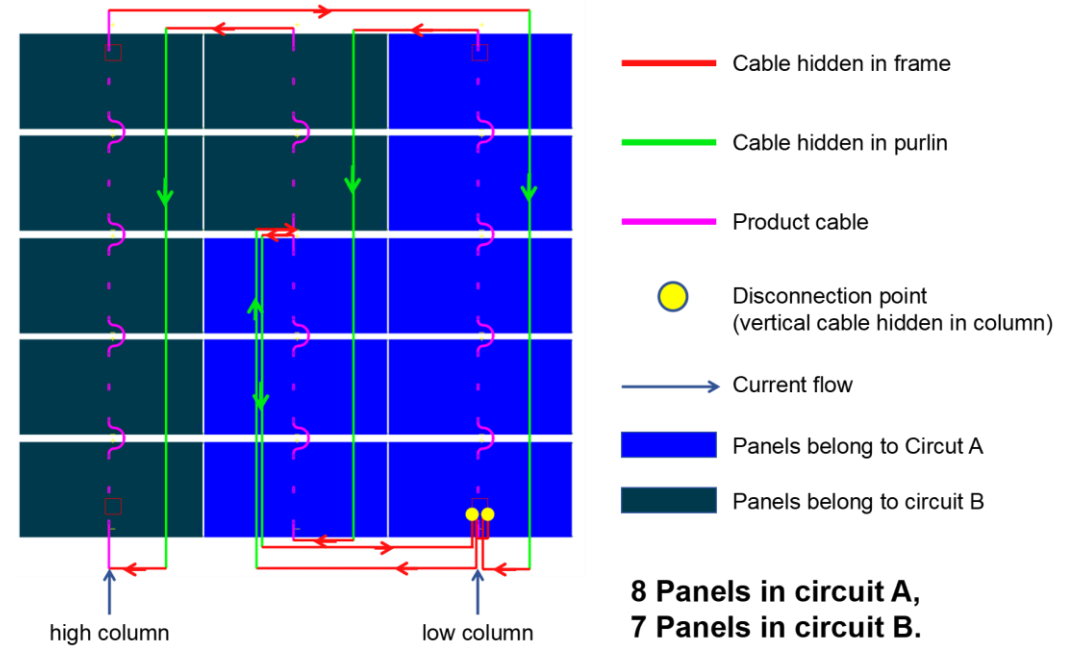
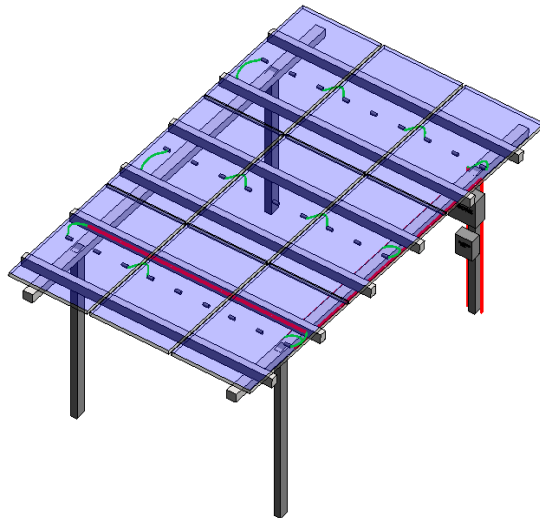


All bolts & nuts will be hidden by specially designed covers.

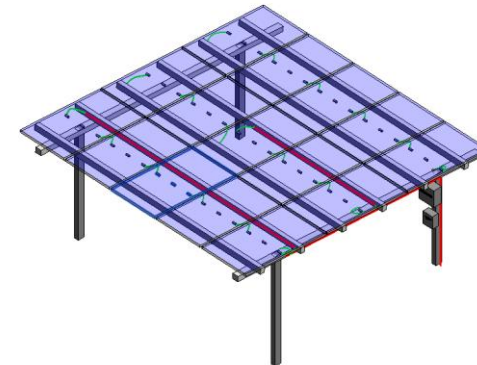
Installation Details - Cable management




9 Panels in one circuit



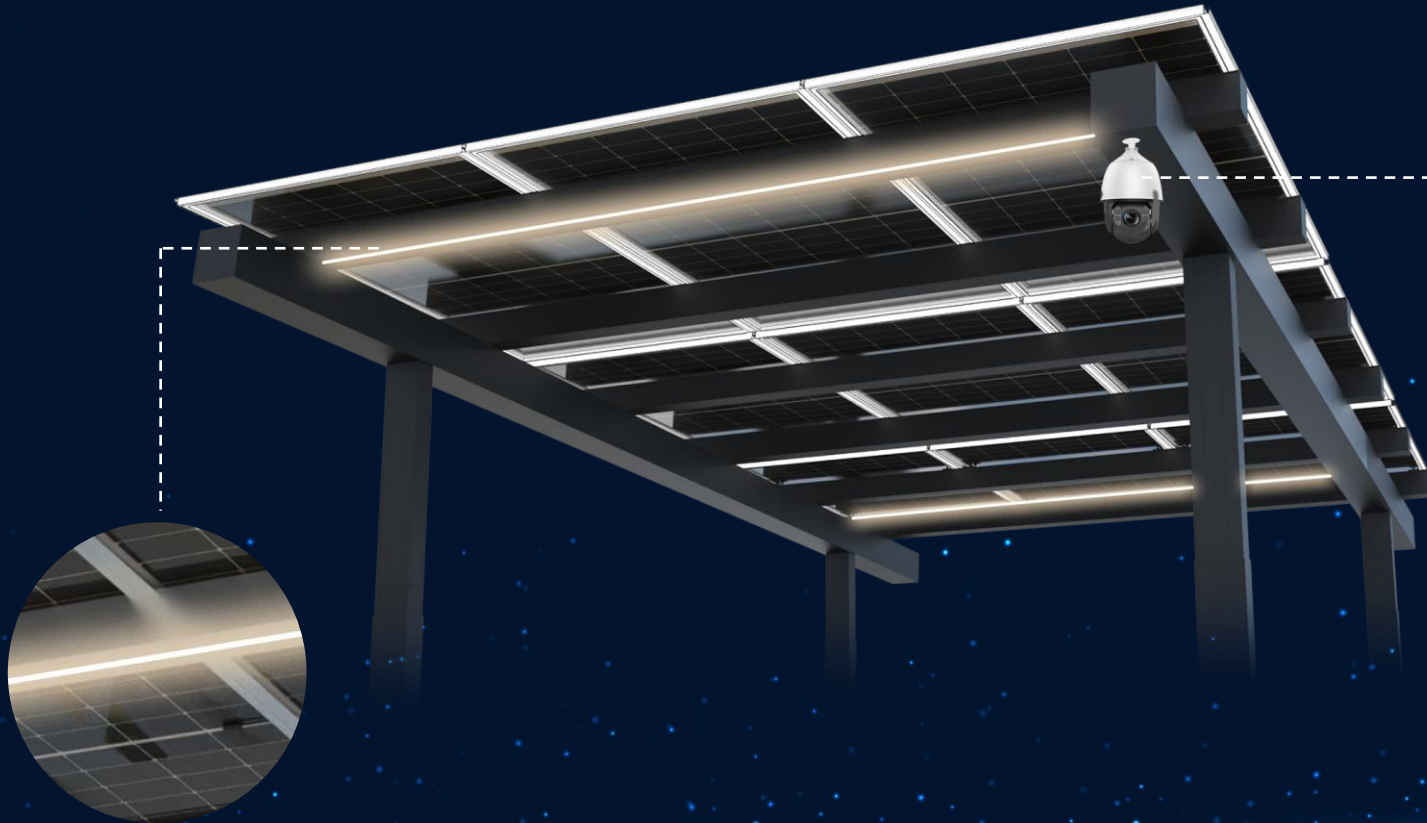
**8 Panels in circuit A,
7 Panels in circuit B.**



GOODWE

Engineered by  UMAX

Compatible with Various Accessories



Motion Sensor Light

Smart Surveillance Camera

Case Study

GOODWE
Engineered by UMAX



Case Study

GOODWE
Engineered by UMAX



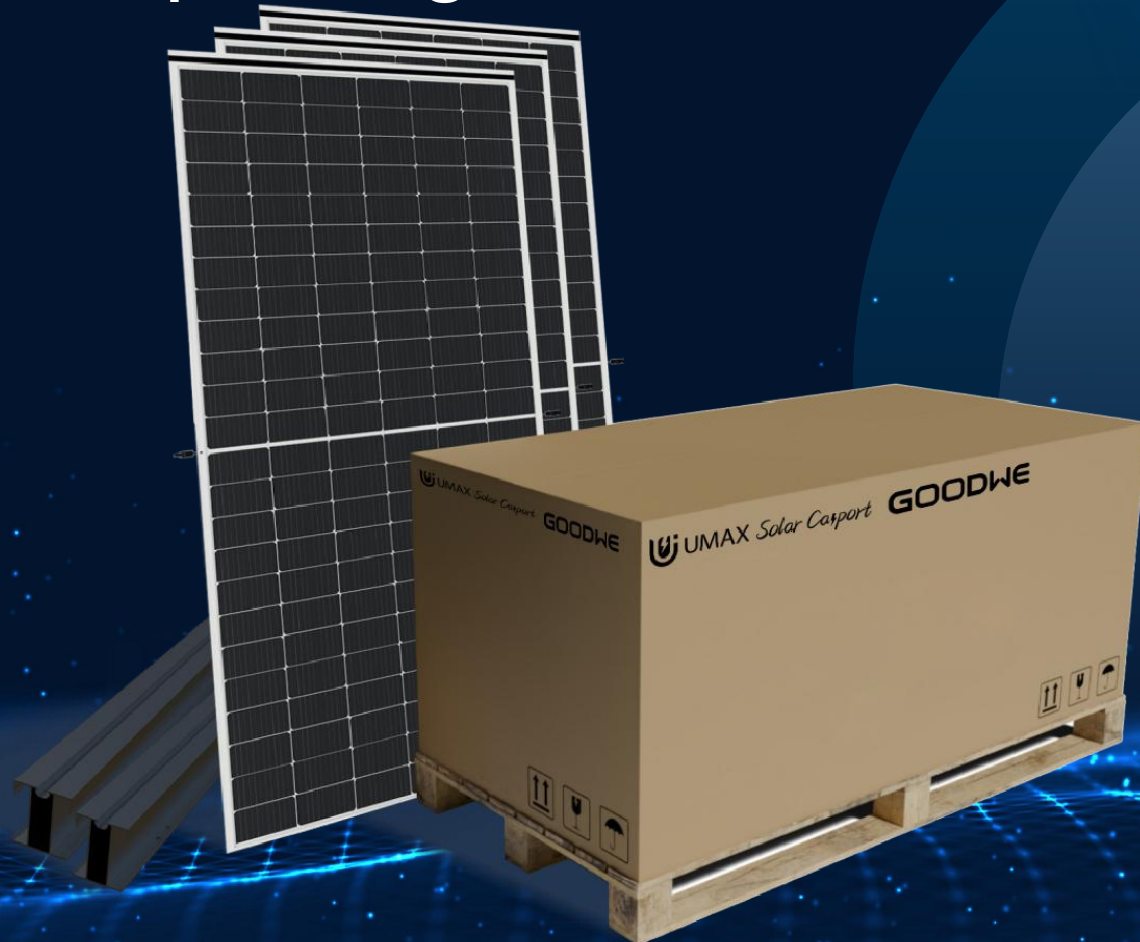


GOODWE

Engineered by  UMAX

ALL-in-One

**Structure and Panels
all-in-one package**





Cost-Savings



All-in-One



Easy Installation



Innovative Modular Design



Structural Waterproof Panels



Accessory Compatibility

